



STONE STREET - 9642

Oil Per Board: **50 uL** Oil Pattern Distance: **42 Feet** Volume Oil Total: **23.15 mL** Total Boards Crossed: **463 Boards**
 Forward Oil Total: **11.5 mL** Reverse Oil Total: **11.65 mL**
 Forward Boards Crossed: **230 Boards** Reverse Boards Crossed: **233 Boards**

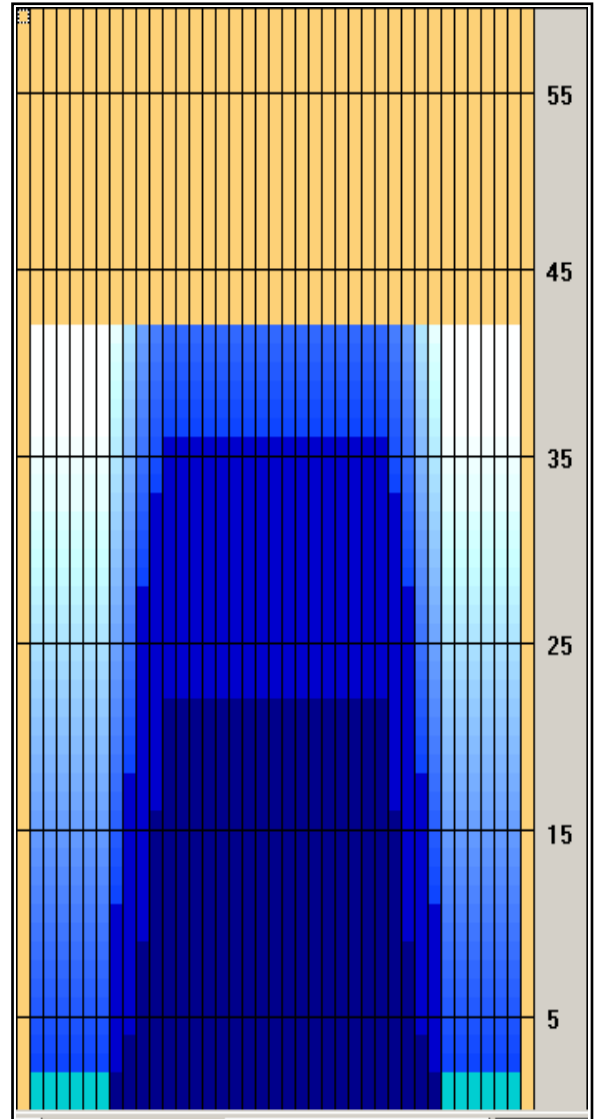
	Start	Stop	Loads	Speed	Crossed	Start	End	Feet	T.Oil
1	2L	2R	2	14	74	0.0	1.9	1.9	3,700
2	9L	9R	1	14	23	1.9	3.8	1.9	1150
3	10L	10R	2	18	42	3.8	8.9	5.1	2100
4	11L	11R	3	18	57	8.9	16.5	7.6	2850
5	12L	12R	2	18	34	16.5	21.6	5.1	1700
6	2L	2R	0	18	0	21.6	34.0	12.4	0
7	2L	2R	0	26	0	34.0	38.0	4.0	0
8	2L	2R	0	30	0	38.0	42.0	4.0	0

Navigation: Forward Reverse More Info

	Start	Stop	Loads	Speed	Crossed	Start	End	Feet	T.Oil
1	2L	2R	0	30	0	42.0	35.0	-7.0	0
2	12L	12R	1	18	17	35.0	32.5	-2.5	850
3	11L	11R	2	18	38	32.5	27.4	-5.1	1900
4	10L	10R	4	18	84	27.4	17.2	-10.2	4200
5	9L	9R	3	18	69	17.2	9.6	-7.6	3450
6	8L	8R	1	14	25	9.6	7.7	-1.9	1250
7	2L	2R	0	10	0	7.7	0.0	-7.7	0

Navigation: Forward Reverse More Info

Forward Oil
Reverse Oil
Combined Oil
Buff Area



Arrow Zone Ratios

Item	2-5L:16L-20	6-10L:16:-20	11-15L:16L-20	16L-20:20-16R	16L-20:20-16R	20-16R:15-11R	20-16R:10-6R	20-16R:5-2R
ul Arrow	100	270	1020	1050	1050	1020	270	100
Zone Ratio	10.5	3.89	1.03	1	1	1.03	3.89	10.5

Track Zone Ratios

Item	3L-7L:18L-18R	8L-12L:18L-18R	13L-17L:18L-18R	18L-18R:17R-13R	18L-18R:12R-8R	18L-18R:7R-3R
Description	Outside Track:Middle	Middle Track:Middle	Inside Track:Middle	Middle: Inside Track	Middle:Middle Track	Middle:Outside Track
Track Zone Ratio	10.5	1.69	1	1	1.69	10.5

